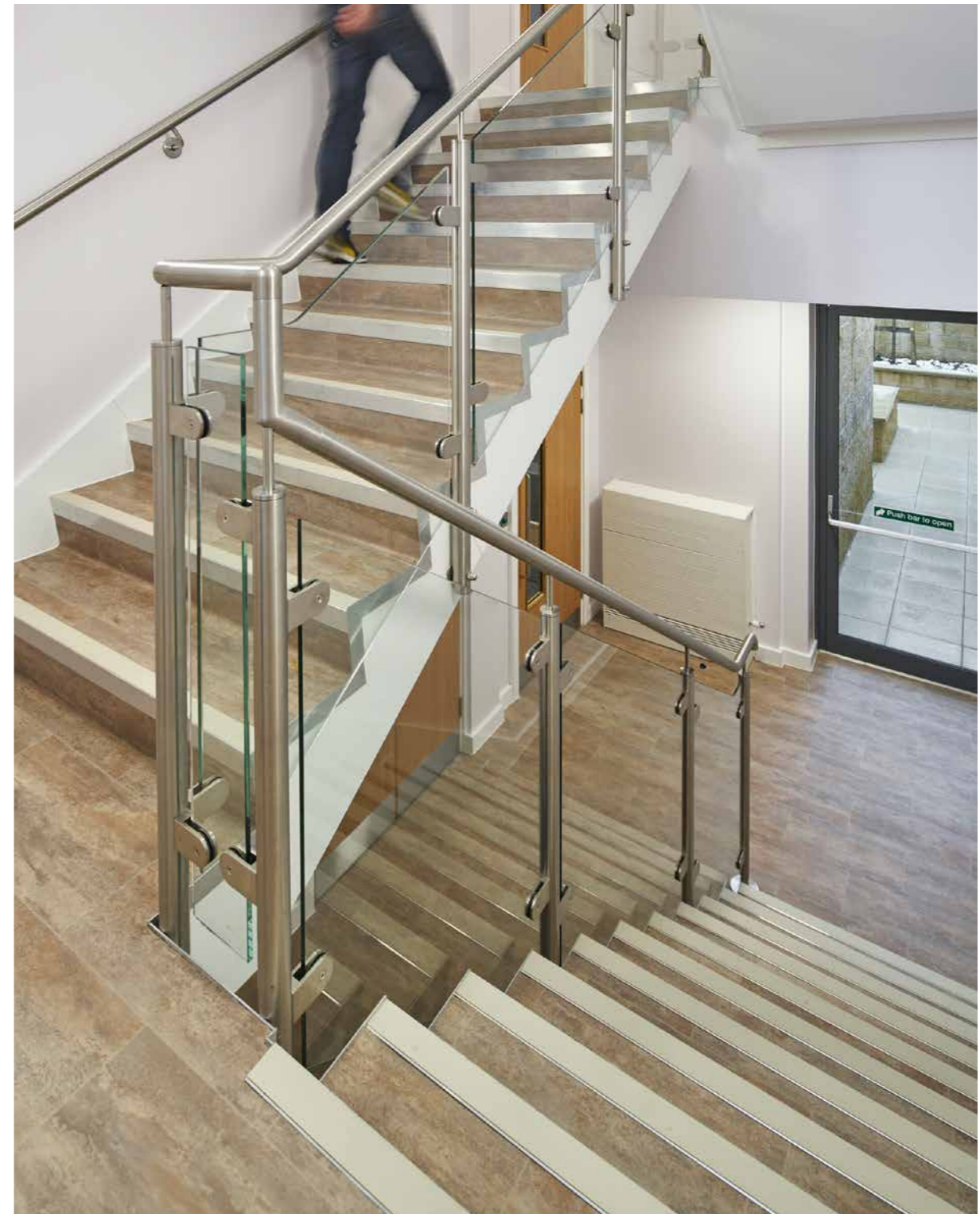


Group

Project: Laura Mitchell Health & Wellbeing Centre



“ Our carpets are an excellent choice for busy healthcare environments as they excel in terms of functionality, aesthetics and ease of maintenance. The carpet ranges installed at the Laura Mitchell clinic work well together to help to differentiate different areas of the building. Our floor plan design service helps to create bespoke design schemes to suit the exact design requirements of a project ”

Karen Burman
Marketing Product Manager

The Laura Mitchell Health and Wellbeing Centre in Halifax, provides Tier 3 Child and Adolescent Mental Health Services (CAMHS) to children and young people in the Calderdale region. Gradus' bespoke floor plan design service was used to help create a functional and attractive environment for both staff and patients at the centre.

On the ground floor Cityscene carpet tiles in Granite and Tin have been installed in the offices and Stratus carpet tiles in Storm Surge and Rainfall have been installed in the consulting rooms and corridors. The neutral colours chosen help to create a clean and contemporary environment with a relaxed and welcoming feel for patients and staff.

In addition, Boulevard Stripe^{HD} and Boulevard 5000^{HD} secondary barrier matting have been installed in the two entrances. Constructed from solution dyed nylon yarn which offers excellent moisture retention properties and a scraper fibre for optimum dirt removal, Boulevard Stripe^{HD} and Boulevard 5000^{HD} help maintain the appearance and longevity of the surrounding floorcoverings.

On the first and second floors Gradus' Streetwise carpet tiles, in Iron and Flint, have been installed together to create a bespoke floor scheme in the meeting rooms and open plan offices.

To help minimise the risk of slips, trips and falls, in line with the guidelines in BS8300:2009+A1:2010 and Approved Document M of The Building Regulations 2010, Gradus' ADM2 Aluminium stair edgings, with canvas interior inserts and TA42 welded corners were installed on the staircases.

GRADUS

Case Study

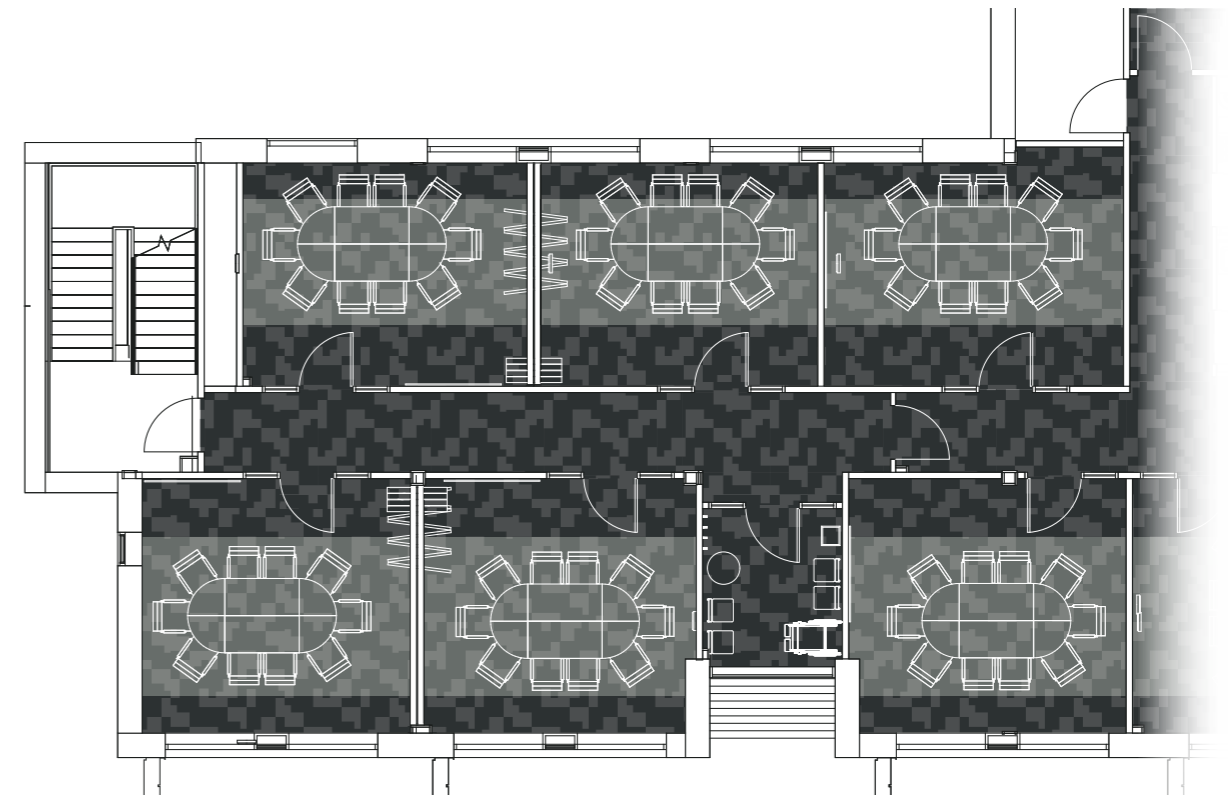
Group

Project: Laura Mitchell Health & Wellbeing Centre

Product Specified:

- [Cityscene carpet tiles](#) - Granite & Tin
- [Streetwise carpet tiles](#) - Iron & Flint
- [Stratus carpet tiles](#) - Storm Surge & Rainfall
- [Boulevard Stripe^{HD}](#) - Magpie
- [Boulevard 5000^{HD}](#) - Cuckoo
- [ADM2](#) - Aluminium Stair Edgings with Canvas insert
- [TA42 welded corners](#)

Healthcare



GRADUS

Case Study

Group

Project: Laura Mitchell Health & Wellbeing Centre

Healthcare

